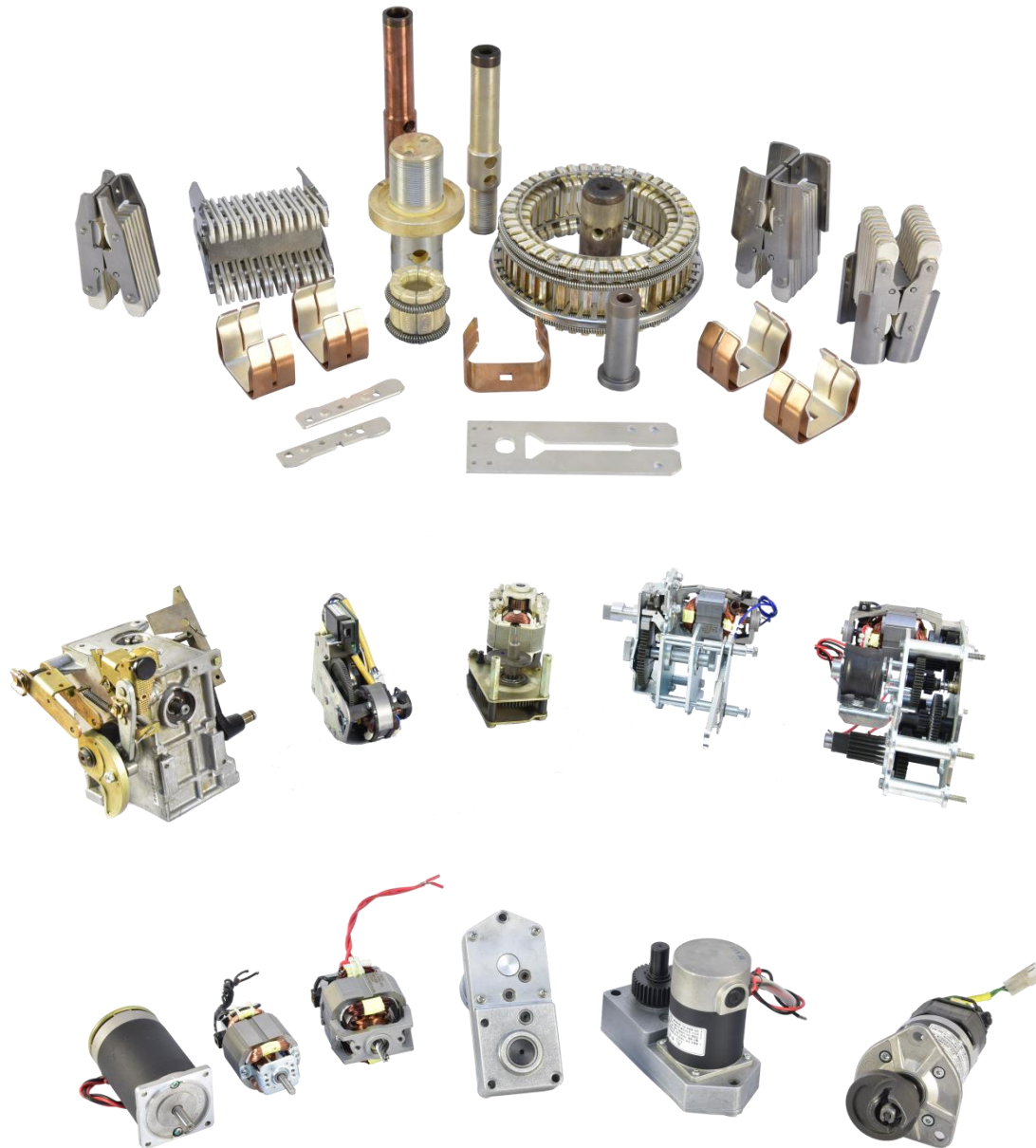


# BAYKA DESIGN

*Medium Voltage Switchgear*





## ***Who Are We?***

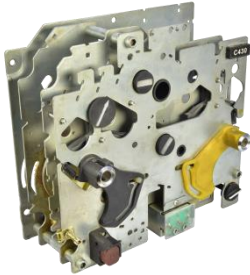
***BayKA Engineering are specialists in the medium voltage switchgear and power components design, testing, manufacturing and establishing factories since 20 years.***

***BayKA Engineering is profesional designer and producer below product type and more..***

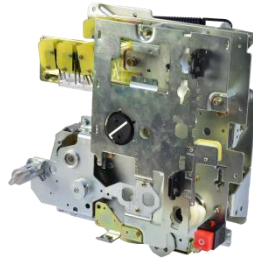
- Vacuum Or Sf6 Circuit Breaker Design , Up to 40.5 kV ,3150 A ,40 kA .
- Metal-clad And Metal-enclosed Switchgear ( Air /SF6 Insulation ) Design ,up to 40.5 kV , 3150 A , 40 kA
- Ring Main Unit Design ,36 kV , 2500 A , 25 kA.
- Sf6 Primary GIS , up to 36 kV , 2500 A , 31,50 kA
- Recloser, Sectionaliser, Overheadline Switches.
- Railway Circuit Breaker And Railway Load Break Switches.
- Sheet Metal And Concrete Substation , Mobile Substation

# Products (Electrical /Auxiliary Parts)

## Mechanisms (Circuit Breaker , On-Load switch )



Indoor On Load Switch Mechanism  
(ALSTOM TYPE)  
Rated voltage : 12/24 /36 kV  
Rated Current : 630A/1250A  
Rated Short Circuit Current : 16/25 kA  
Insulation : SF6



Indoor On Load Switch Mechanism  
(SCHNEIDER TYPE)  
Rated voltage : 12/24 /36 kV  
Rated Current : 630A/1250A  
Rated Short Circuit Current : 16/25 kA  
Insulation : Sf6



Indoor Circuit Breaker Mechanism  
(SCHNEIDER TYPE)  
Rated voltage : 12/24 /36 kV  
Rated Current : 630A/1250A/2500 A  
Rated Short Circuit Current : 16/25/31.5 kA  
Insulation : Sf6/Vacuum

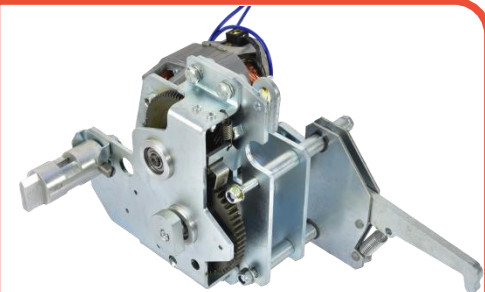
## Gear Box (Circuit Breaker , On-Load switch )



Indoor On Load Switch Mechanism  
Rated voltage : 12/24 /48/110/220 VDC



Indoor On Load Switch Mechanism/  
Circuit breaker Mechanism  
Rated voltage : 12/24 /48/110/220 VDC  
(ABB TYPE)



Indoor On Load Switch Mechanism/  
Circuit breaker Mechanism  
Rated voltage : 12/24 /48/110/220 VDC  
(SCHNEIDER TYPE)



## Electrical Contacts



Tulip Contact for Metal-Clad ( ABB TYPE)  
Rated voltage : 12/24 /36 kV  
Rated Current : 630A/1250A/2500  
Rated Short Circuit Current : 25/31.5 kA  
Insulation : SF6/AIS



Flat Contact for Metal-Clad (SIEMENS TYPE)  
Rated voltage : 12/24 /36 kV  
Rated Current : 630A/1250A/2500  
Rated Short Circuit Current : 25/31.5 kA  
Insulation : SF6/AIS



Fuse Holder (SIEMENS TYPE)  
Rated voltage : 12/24 /36 kV  
Rated Current : 630A  
Insulation : AIS



Tulip Contact  
Rated Current : 630A/1250A/2500A/3150A  
Rated STC : Up to : 63 kA



Arcing contact for Circuit Breaker ( SCHNEIDER )  
Rated voltage : 12/24 /36 kV  
Rated Current : 630A/1250A/  
Rated Short Circuit Current : 25/31.5 kA  
Insulation : SF6/AIS



Movable Contact for circuit Breaker  
Rated voltage : 12/24 /36 kV  
Rated Current : 630A  
Rated Short Circuit Current : 25/31.5 kA  
Insulation : AIS



CONTACT SPRING FOR MOVABLE CONTACT  
Rated voltage : 12/24 /36 kV  
Rated Current : 630A/1250A/2500  
Rated Short Circuit Current : 25/31.5 kA  
Insulation : SF6/Vacuum



Movable Contact for LBS ( LG )  
Rated voltage : 12/24 /36 kV  
Rated Current : 630A/1250A/  
Rated Short Circuit Current : 16/25 kA  
Insulation : SF6

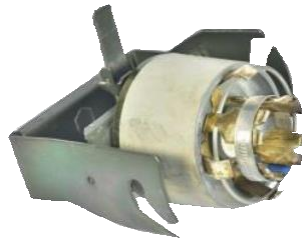


Movable Contact for circuit Breaker  
Rated voltage : 12/24 /36 kV  
Rated Current : 630A/1250A/  
Rated Short Circuit Current : 16/25 kA  
Insulation : SF6

## Electrical Contacts



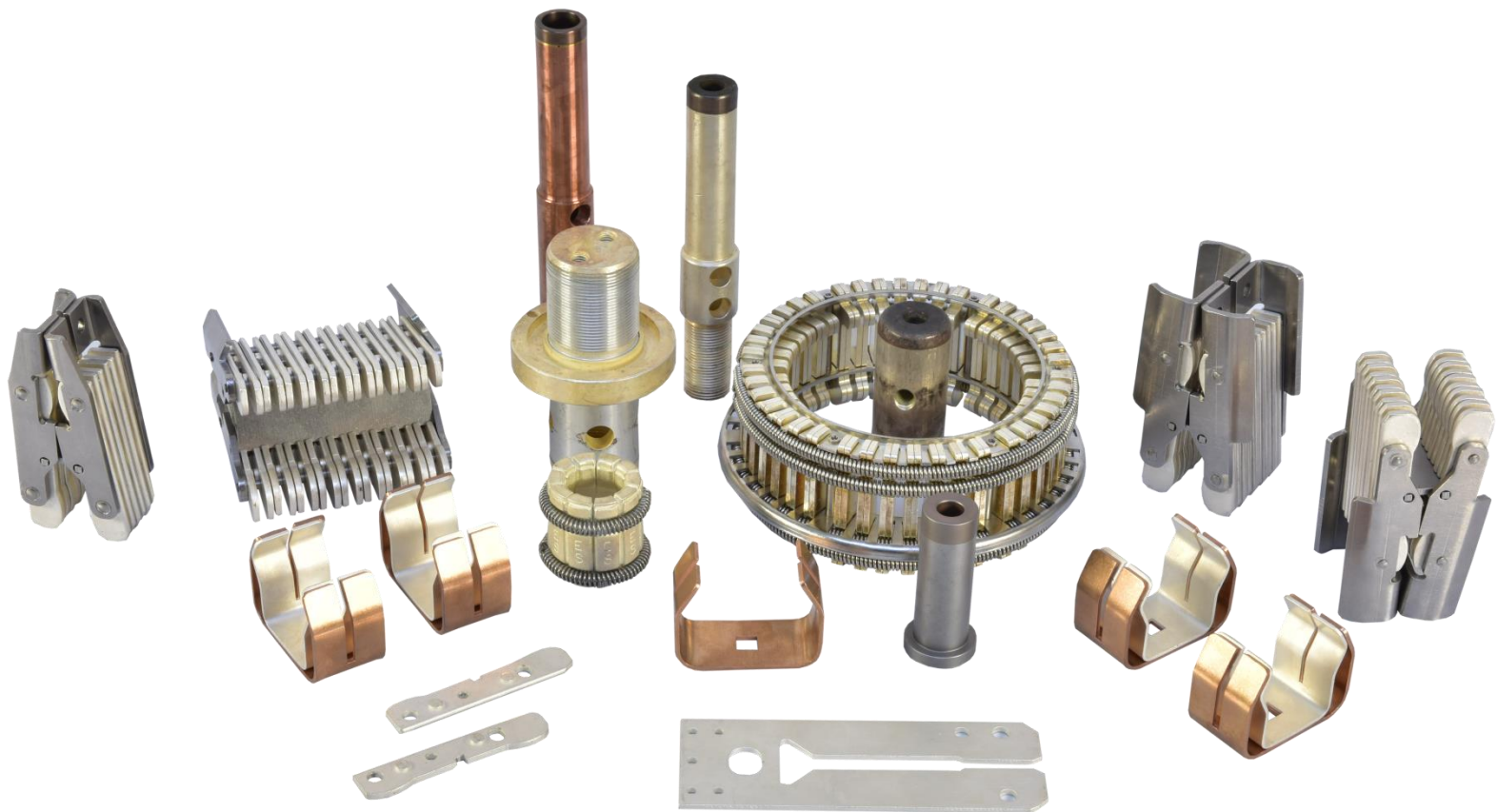
Tulip Contact for Metal-Clad (ABB)  
Rated voltage : 12/24 /36 kV  
Rated Current : 630A/1250A/2500  
Rated Short Circuit Current : 25/31.5 kA  
Insulation : SF6/AIS



RMU fuse Holder (ABB)  
Rated voltage : 12/24 /36 kV  
Rated Current : 630A  
Rated Short Circuit Current : 16/25 kA  
Insulation : SF6



Movable Contact for circuit Breaker  
Rated voltage : 12/24 /36 kV  
Rated Current : 630A  
Rated Short Circuit Current : 16/25 kA  
Insulation : AIS



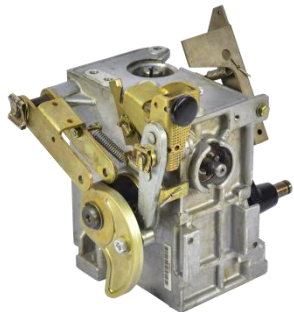
## Electrical Motors



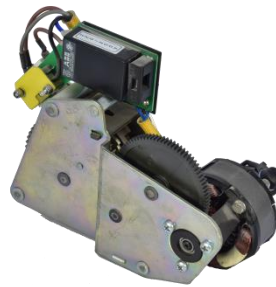
Spring Charging Motor (PMDC)  
Rated voltage : 12/24 /48/110/220 V  
Insulation : SF6/AIS

Spring Charging Motor (Universal)  
Rated voltage : 12/24 /48/110/220 V  
Insulation : SF6/AIS

Spring Charging Motor (Universal)  
Rated voltage : 12/24 /48/110/220 V  
Insulation : SF6/AIS



Spring Charging Motor with Gearbox  
(Universal) (Siemens)  
Rated voltage : 12/24 /48/110/220 V  
Insulation : SF6/AIS/Vacuum



Spring Charging Motor with Gearbox  
(Universal) (ABB)  
Rated voltage : 12/24 /48/110/220 V  
Insulation : SF6/AIS/Vacuum



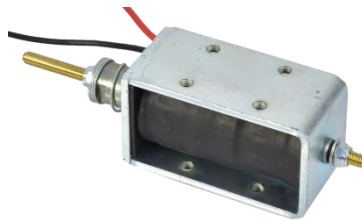
Spring Charging Motor with Gearbox  
(Universal) (Schneider)  
Rated voltage : 12/24 /48/110/220 V  
Insulation : SF6/AIS/Vacuum



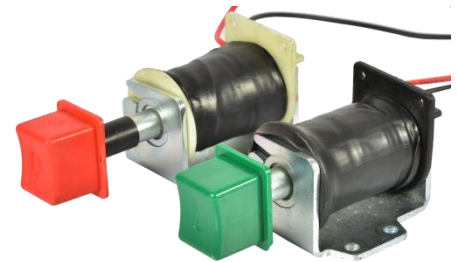
## Shunt Opening And Closing Coils



Shunt Opening-Closing Coils  
Rated voltage : 12/24 /48/110/220 V  
Insulation : SF6/AIS/Vacuum



Shunt Opening-Closing Coils  
Rated voltage : 12/24 /48/110/220 V  
Insulation : SF6/AIS/Vacuum



Shunt Opening-Closing Coils  
Rated voltage : 12/24 /48/110/220 V  
Insulation : SF6/AIS/Vacuum



Shunt Opening-Closing Coils  
Rated voltage : 12/24 /48/110/220 V  
Insulation : SF6/AIS/Vacuum



Shunt Opening-Closing Coils  
Rated voltage : 12/24 /48/110/220 V  
Insulation : SF6/AIS/Vacuum



Shunt Opening-Closing Coils  
Rated voltage : 12/24 /48/110/220 V  
Insulation : SF6/AIS/Vacuum



# Products (Electrical /Auxiliary Parts)

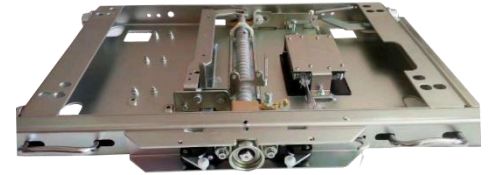
## Metal- Clad Parts



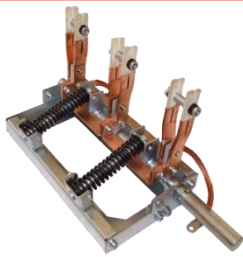
Metal-Clad Busbar Disconnector  
Switch and Earthing Switch Open and  
Close Mechanism with Motor.  
Rated voltage : 12/24 /48/110/220 V  
Insulation : SF6/AIS



Tulip Contact  
Rated Current : 630A/1250A/2500A/3150A  
Rated STC : Up to : 63 kA



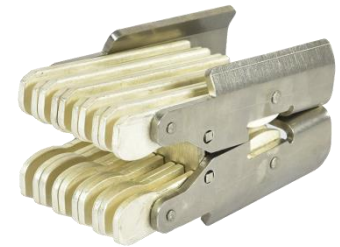
Metal Clad VCB trolley with motor  
Rated voltage : 12/24 /48/110/220 V  
Insulation : AIS



Earthing Switches (ABB, Siemens)  
Rated voltage 12/24/36/40,5 kV  
Rated STC : 25 kA, 31,5 kA – Class B  
Insulation : AIS



Tulip Contact  
Rated Current : 630A/1250A/2500A/3150A  
Rated STC : Up to : 40kA



Flat Contact  
Rated Current : 630A/1250A/2500A/3150A  
Rated STC : Up to : 40 kA

## Ring main Unit Parts



Extendible Busbar Connection Contact  
(Silicon – EPDM)  
Rated voltage : 12/24/36 kV  
Insulation : Silicon-EPDM



Dammy Plug (Silicon – EPDM)  
Rated voltage : 12/24/36 kV  
Insulation : Silicon-EPDM



Bushing Insulator  
Rated voltage : 12/24/36 kV  
Insulation : Epoxy resin

## Machining – Investment Casting – Gear –Welding Parts



Fuses Upper holder for LBS  
Insulation : SF6/AIS



Fuses Upper holder for LBS  
Insulation : SF6/AIS



Fuses Upper holder (silicone) for LBS and  
Arcing Cone for Circuit Breakers (PTFE)  
Insulation : SF6/AIS



Magnetic field fixer  
Insulation : AIS



CB charging gear - investment casting  
Insulation : SF6/AIS/Vacuum



CB charging gear parts -investment casting  
Insulation : SF6/AIS/Vacuum



Operating arms ( Load break switch ,  
Disconnecter Switch)

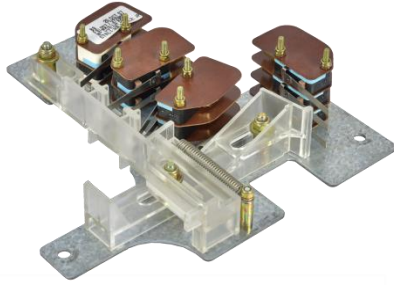


Gear parts for Charging gear-box

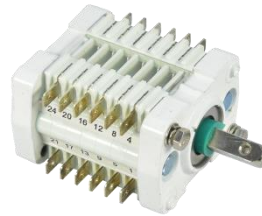


Welding Assesmbly

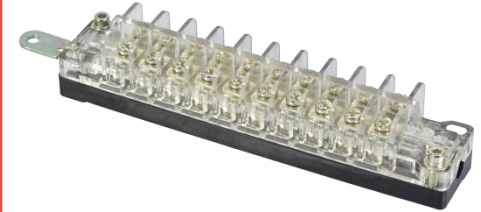
## Auxiliary Contacts / Mechanical counter /Manometer / Pressure Gage



Auxiliary Contact for Schneider Load Break Switch  
24/48/110/220 VDC



Auxiliary Contact for Circuit Breaker and LBS  
24/48/110/220 VDC



Auxiliary Contact for Disconnector Switches  
24/48/110/220 VDC



Limit Switches , Auxiliary Contact for Schneider Load Break Switch  
24/48/110/220 VDC



Operating Counter / Mechanical Counter  
Insulation : SF6/AIS/Vacuum

# BAYKA DESIGN

*Medium Voltage Switchgear*

Address: Ivedik Industry Zone 1479. Street No: 57 Ivedik - Yenimahalle - Ankara - TURKEY

Phone: +90 312 3540363 - Mobile Phone: +90 5065051533

Mail: bayram@baykaelectrotech.com

Mail: bkavusmusoglu@gmail.com

Web: [www.baykaelectrotech.com](http://www.baykaelectrotech.com)